

# User's Manual Version 8.5



**Thank you for choosing Sting  
ST-400, ST-800, ST-1600**

Please read this manual before using this product.

Copyright ©2012 Sting Alarm, Inc. All rights reserved. Reproduction in whole or in part without permission is prohibited



# User's Manual Version 8.5

## **Important considerations**

- The sting monitoring software has been designed and tested to run as a standalone application. Installing and running other software/hardware on this machine may cause unexpected and/or undesired results including but not limited to loss of recording capability and recorded events.
- Increasing the recording resolution of one or more cameras can substantially decrease the available recording time of your DVR. A DVR that can record 15 days at its normal resolution may only record 5 days with all cameras in their highest resolution.
- Your Sting DVR by default is set to only record when there is motion in front of the camera. Trees swaying in the breeze or a busy highway in the background can reduce the available recording time. Reorient the cameras or use the blocking features of your DVR to maximize the recording time.
- While Sting is available to assist you in backing up an event for law enforcement or for internal use, we cannot be responsible for missed events.



# User's Manual Version 8.5

## Basic Operation

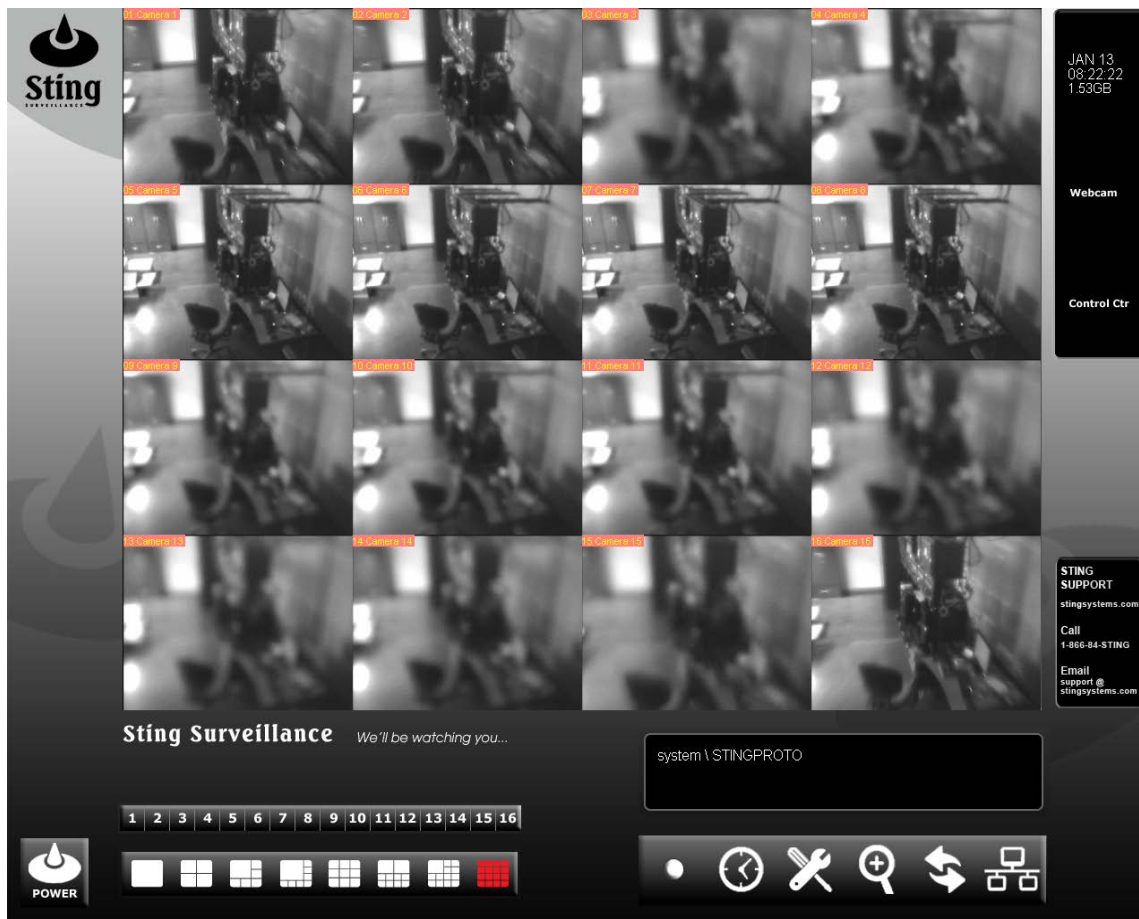
### Startup

This system has been configured to startup, and begins monitoring on its own. **(Figure 1)** shows how the system will look right after startup. Your screen may appear different depending on the number of cameras supported and your preference for the layout.

*Note: Once per week your system will restart itself to ensure reliable recording. The time of this restart can be configured, but by default will occur between 5 and 7 am once every 7 days.*

In the next section, we will discuss the controls and features of this screen.

**Figure 1**



Copyright ©2012 Sting Alarm, Inc. All rights reserved. Reproduction in whole or in part without permission is prohibited



# User's Manual Version 8.5

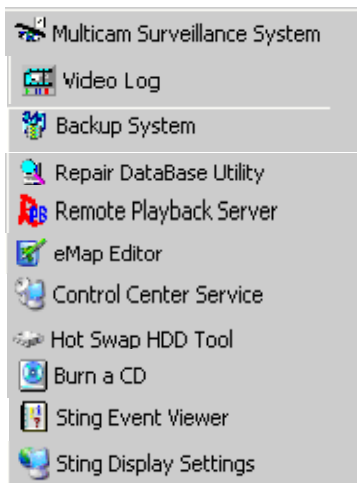
## Keylock

To ensure that only authorized users can review/record events Sting has implemented a Keylock system. To access the system move the mouse to the bottom of the screen and the following menu bar (**Figure2**) will appear.

**Figure 2**



← Standard system tools



- ← Start Monitoring
- ← Playback an event
- ← Save event for viewing or prep for burning
- ← System Utilities
- ← Allow Remote Playback
- ← Manage your cameras via eMap
- ← Starts Control Center Service
- ← Manage Optional Hot swap of disk drives
- ← Record backed up events to CD or DVD
- ← View System Events
- ← View Display Properties



← Key lock \*Requires privilege  
• Manages the Keylock system



← Restart \*Requires privilege  
• Restarts the system



← Shutdown \*Requires privilege  
• Stops the system without a restart



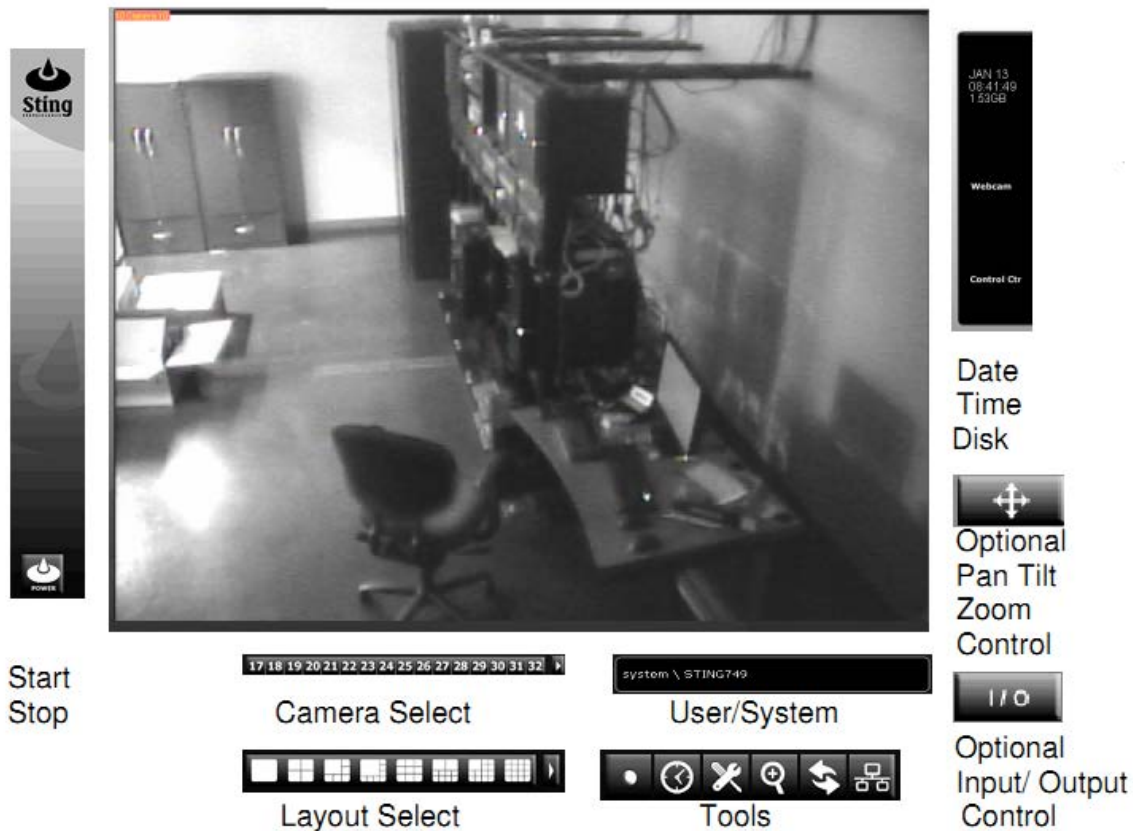
← Task Manager  
• Shows programs that are running on your system



# User's Manual Version 8.5

## Monitoring Controls and Features

(Figure 3) shows an exploded view of the monitor screen. A more detailed description follows.



**Camera Select**– Choose one camera to fill the viewing area. The camera number corresponds to the channel number of the camera label in the upper left corner of the image.

**Date/Time/Disk**– **Date/Time**- Displays the current date and time that will be associated with images recorded on your DVR.

**Disk**- If your system is configured to recycle disk space the amount of space available will decrease to about 1GB and then remain there. This means that your oldest files are being reused.

Copyright ©2012 Sting Alarm, Inc. All rights reserved. Reproduction in whole or in part without permission is prohibited



# User's Manual Version 8.5

**Viewing Layout Select** – Click on one of these buttons to watch one, two, or more of your cameras; up to thirty-two simultaneously according to your DVR's potential.

**Power**- Click here to login, minimize, or shutdown the surveillance software. These options are limited by user account permissions.

**User \ System**– Shows current user logged in or if no user is logged in. The name of the system is displayed.

**Tools** -These commands will be covered in detail later in this document, and most options are limited by the current users' login privileges. Selecting an icon in this area will display a menu with your currently available options listed in it.

**I/O** – This optional feature allows input from POS devices and from Alarm Systems. The I/O feature also allows output to an alarm system (for example when motion is detected).

**Note:** *This feature is not available on all Sting Surveillance Systems.*

**PTZ** – This optional feature allows control of Pan Tilt and Zoom (PTZ) capable devices. This may require additional cabling.



← Monitor button allows you to change which cameras are recording, or modify the I/O monitoring state.



← Schedule button allows setup or modifying scheduled monitoring. Also, access the schedule center to provide automated maintenance events.



← Setup button configures or changes the primary recording system options.



← Playback button allows access to View System Logs, eMap, or Recorded footage



← Automatically scan or cycle through live camera views. (This does not affect the recording status of any camera.)



← Displays or configures the system's Network options.

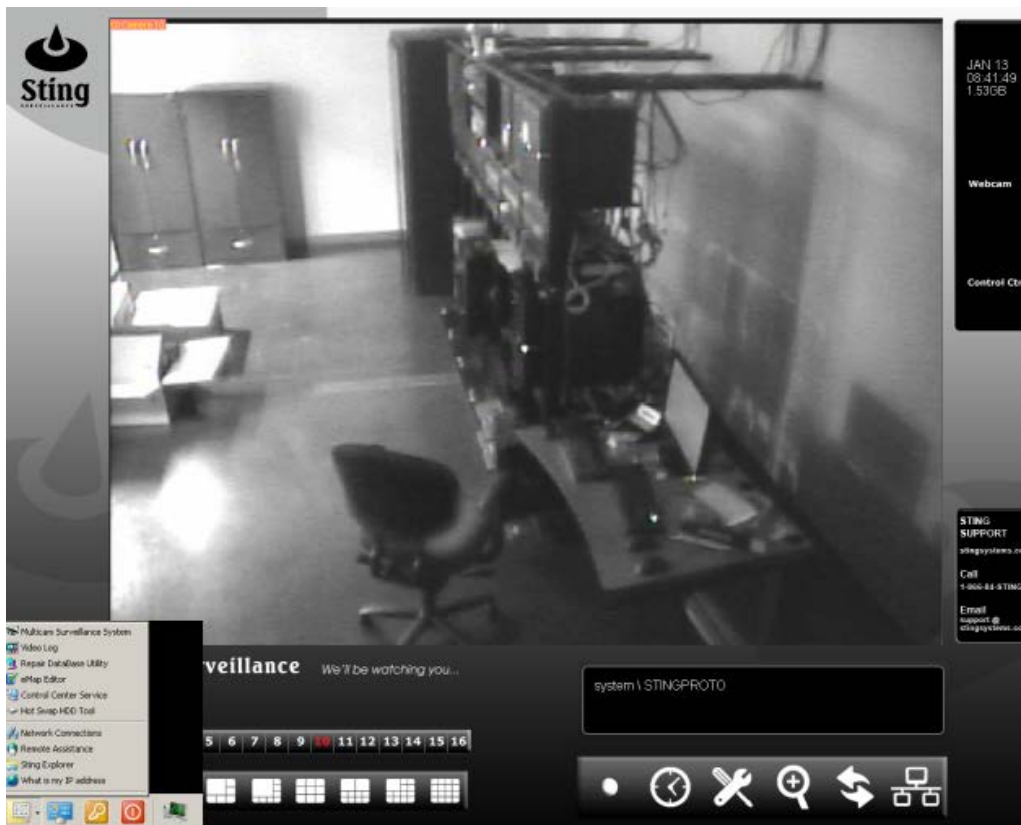
**Viewing Area** - In this area you can watch one or all of your cameras. You can select the layout by clicking one of the buttons in the Viewing Layout Selection area. The camera name and number are displayed in the upper left hand corner of each view. If the camera nametag is red rather than yellow, the surveillance system is recording that particular channel.



# User's Manual Version 8.5

## ***Playback Controls and Features***

The playback functions allow you to view previously recorded events. The surveillance system will continue to record footage during playback. There are multiple ways to enter the playback mode: The first method is to move the mouse to the bottom of the screen and the “Keylock” menu will appear as shown below. Click on the first icon (***File Folder***) and the menu below will appear.



Click on  Video Log and the playback window will appear

Copyright ©2012 Sting Alarm, Inc. All rights reserved. Reproduction in whole or in part without permission is prohibited



# User's Manual Version 8.5

The following figures show an exploded view of the playback screen.



- Monitor Window** – View one or more camera views as set by the Layout Select
- Layout Select** – Choose how the views will be displayed in the monitor window
- Camera Select** – Choose one camera to appear in the monitor window
- Search Mode** - Normal (Basic) or Advanced (Select a date and time range)
- Event Selection** – Choose an event by date (Basic/Normal), Advanced will be discussed later.
- Playback Controls** –

- Reverse Play/Pause
- Play/Pause
- Stop
- Jump to beginning
- Move one frame backward
- Move one frame forward
- Jump to end
- Increase playback speed
- Reduce playback speed
- Zoom in (Click on tool, then click on the image you would like to zoom)
- Zoom out (Click on tool, then click on the image you would like to zoom)





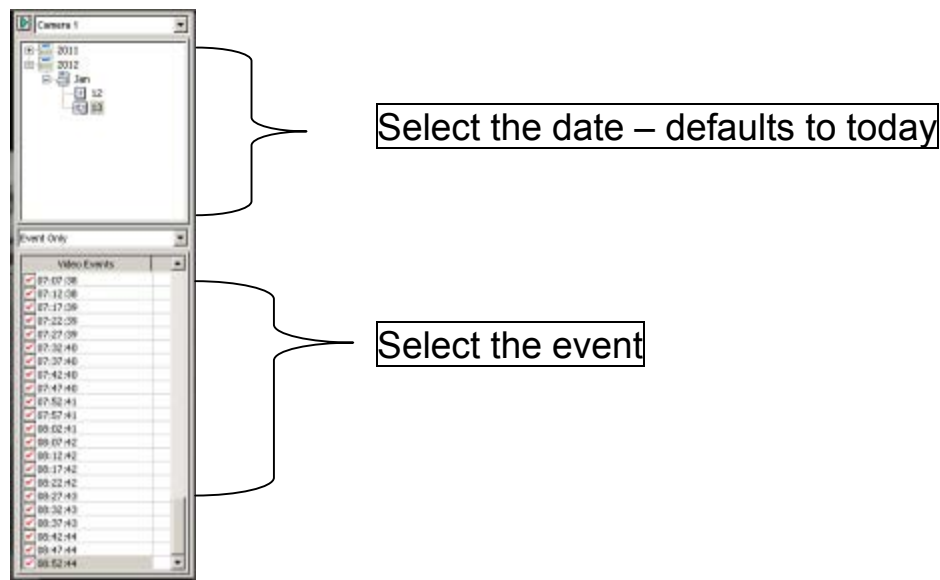
# User's Manual Version 8.5

## Basic Event Selection

An event is a video recording that begins when motion is detected and stops when the motion stops or 5 minutes whichever comes first. If motion continues beyond 5 minutes a new event is created and recording continues.

*Note: There is no video lost between events.*

The system defaults to showing events for today's date. If you know the time of the event click on the event with a time stamp closest to the beginning time and press the play button on the playback controls.



❖ To control the playback use the playback controls and the quick search tool.



Playback Controls



Quick Search Tool

- To select a range of events click on the first event and then go to the last event and press shift and click at the same time. If the event that you are interested in is prior to today, click on the “+” sign next to the year, then the month and finally the day you are interested in viewing. Then select the event you are interested in. To select a range of events click on the first event and then go to the last event and press shift and click at the same time.

Copyright ©2012 Sting Alarm, Inc. All rights reserved. Reproduction in whole or in part without permission is prohibited

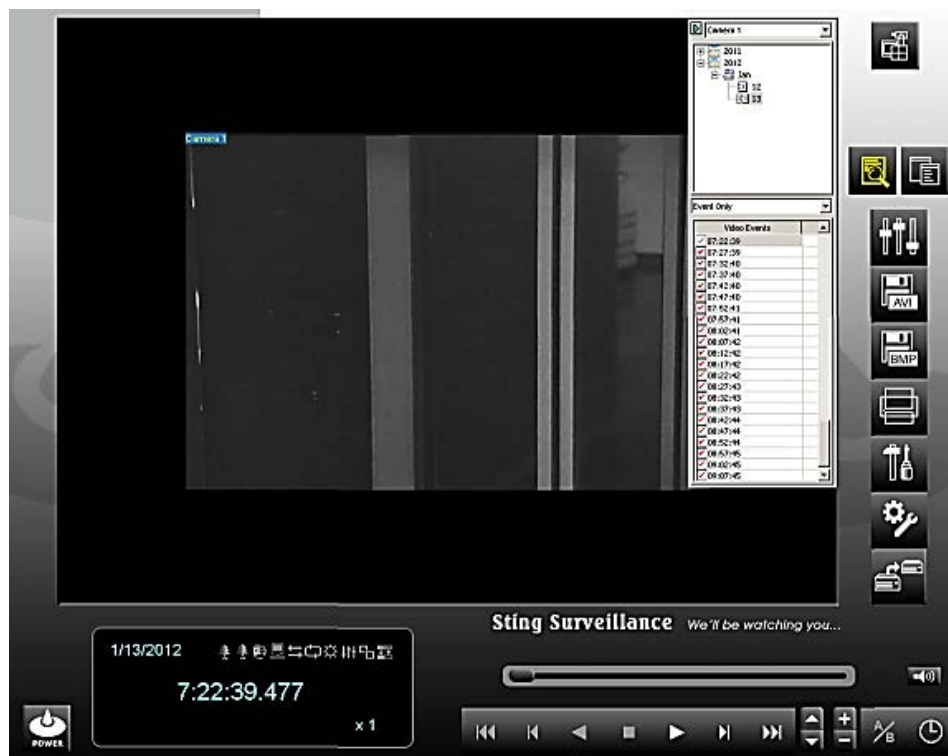


# User's Manual Version 8.5

## Advanced Search

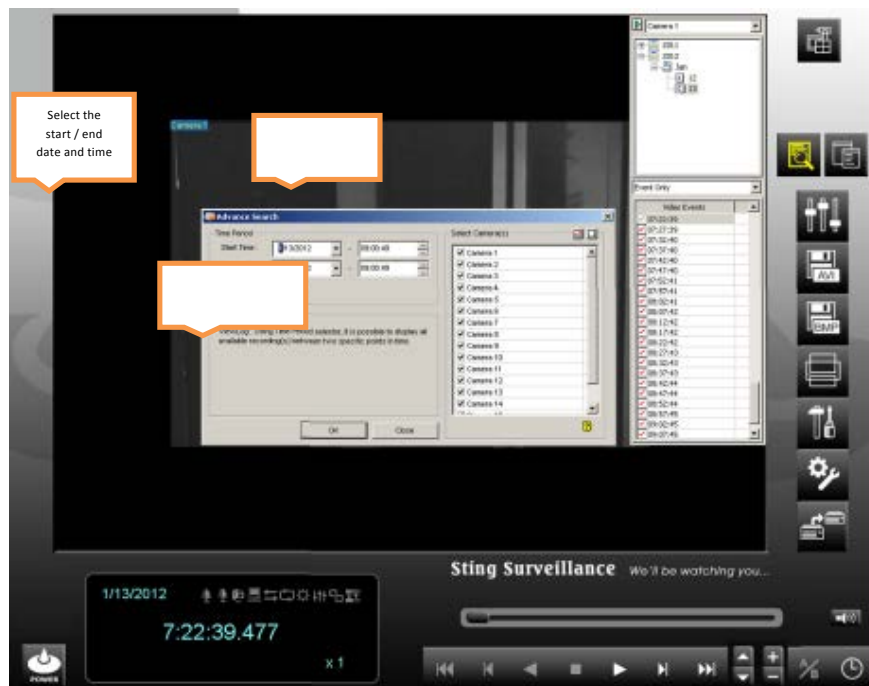
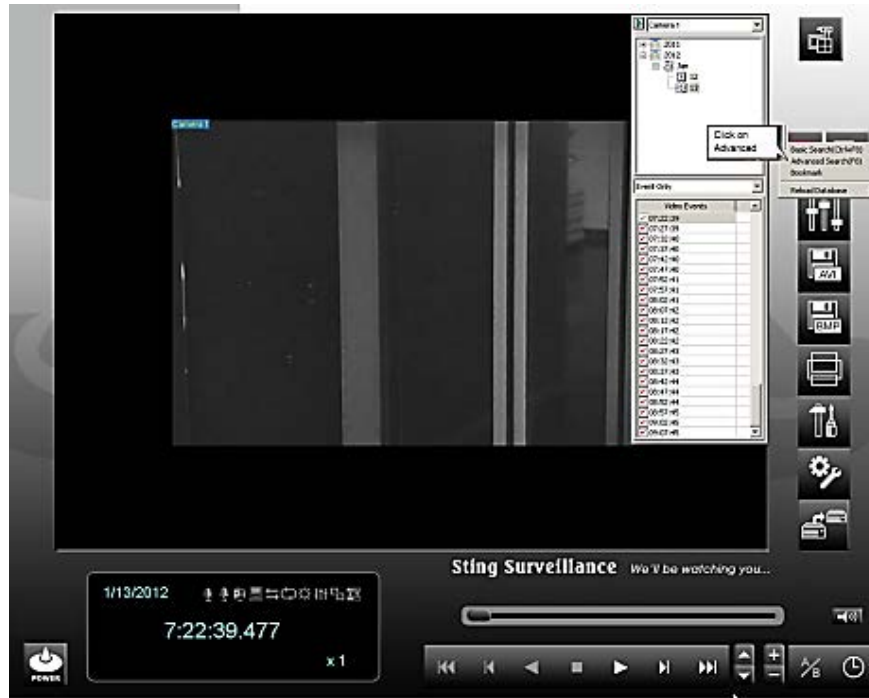
The advanced search tool allows you to specify a specific date/time range for your search.

- ❖ Click on the “*Advance*” *Search Mode* button as shown below.
- ❖ Click on the *Advanced Search (F8)* to bring up the advanced search screen. Then use the playback controls to review the event.





# User's Manual Version 8.5



Copyright ©2012 Sting Alarm, Inc. All rights reserved. Reproduction in whole or in part without permission is prohibited



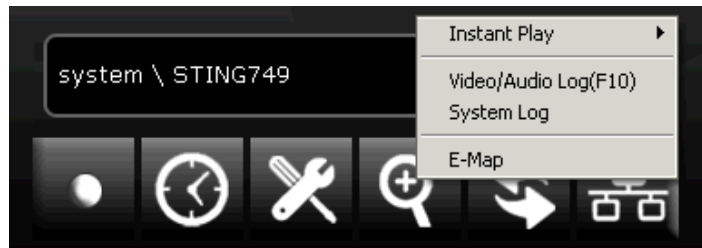
# User's Manual Version 8.5

## Backup

This section will show you on how to make a copy of an event or series of events to a CD or DVD for your internal use or use by law enforcement.

- ❖ Proceed with the following steps:

**Step 1** – Select the “View Log” button. The following menu will appear:

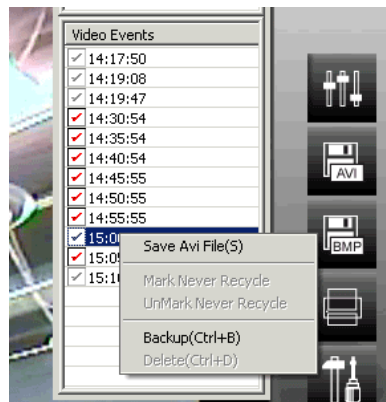


Click on “Video/Audio Log”

**Step 2** – Select the date (year/ month/ date)



- ❖ Then select the video event by time and right-click on it. The following menu will appear:



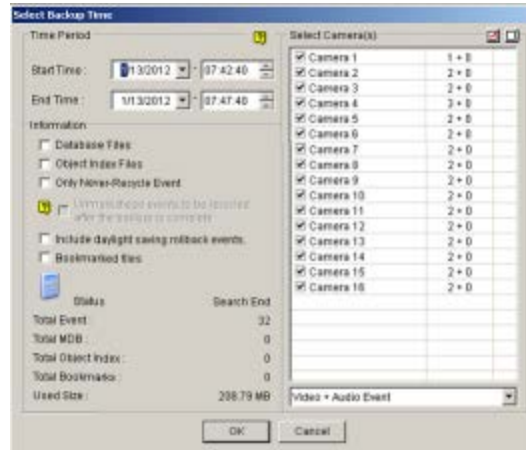
- ❖ Click on Backup

Copyright ©2012 Sting Alarm, Inc. All rights reserved. Reproduction in whole or in part without permission is prohibited

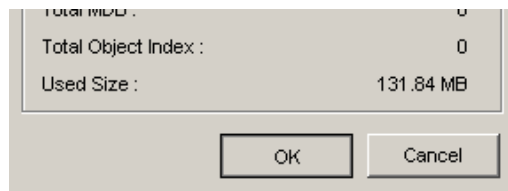


# User's Manual Version 8.5

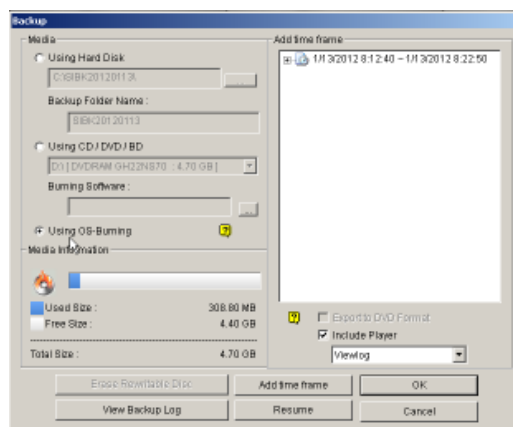
**Step 4** – Verify that the times and dates listed in “Start Time” and “End Time” are listed correctly. Also make sure the cameras you wish to backup are checked in.



- ❖ Once you have verified the selected time and dates, Click OK.



- ❖ Click OK again on the following window

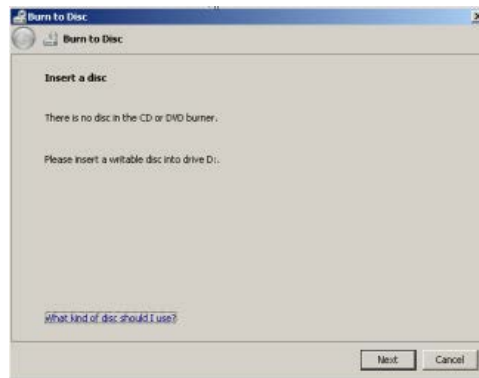


Copyright ©2012 Sting Alarm, Inc. All rights reserved. Reproduction in whole or in part without permission is prohibited

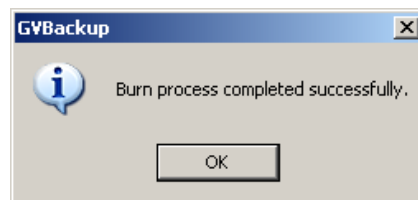


# User's Manual Version 8.5

- ❖ The following window will appear. This window means that the CD is currently being burned.



- ❖ When burning is complete, this box will show. Click OK and the system will eject the backup disc.





# User's Manual Version 8.5

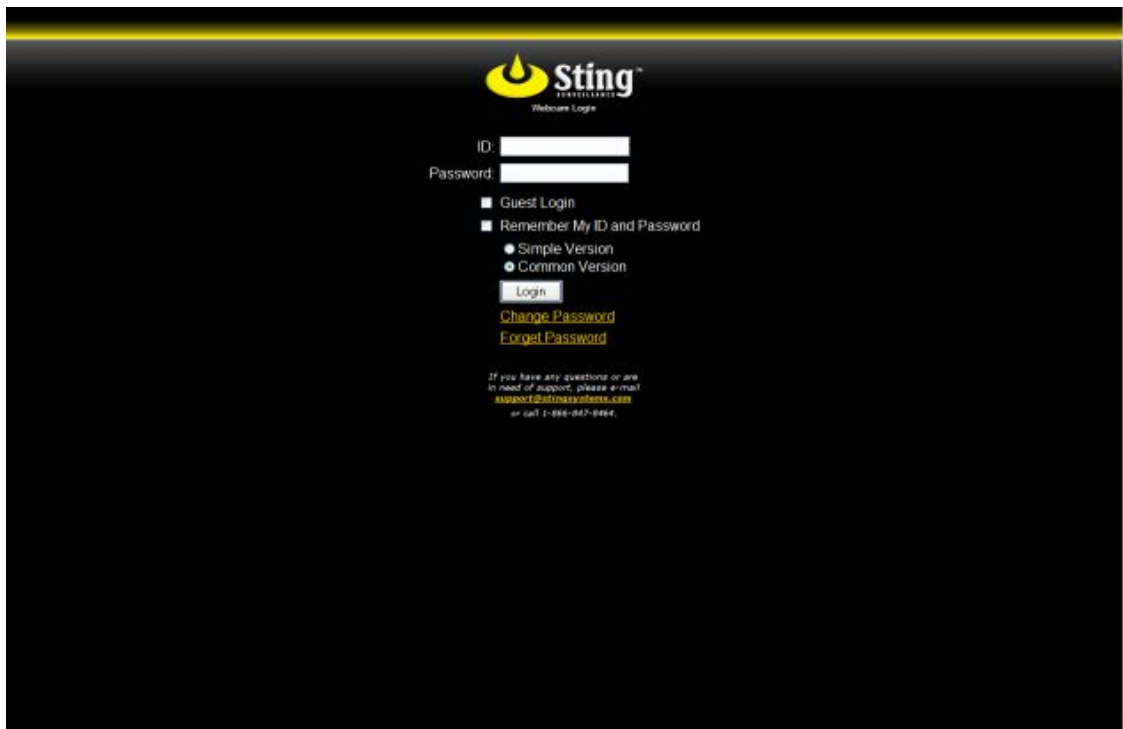
## Remote access via the Web

Start your web browser... If you are a Windows Vista user make sure that you are running the most current version and all software patches have been applied.

Enter the IP address of your DVR plus the port number of the DVR you would like to connect to. By default port numbers for sting DVR's starts at 8080 although any port number is possible. Insert your "Username" and "Password" in the prompt.

<http://XXX.XXX.XXX.XXX:8080>

**Note:** X represents digits, making up the IP address to DVR.



**Note:** There are a number of factors that will determine how smooth your video plays back. Included in this are the upstream and downstream speeds of the internet connections at both the DVR end and the location where you are using the remote viewer, as well as the quality of the networks that the connection passes through.

(Contact 702-737-8464 or 866-847-8464 if you are having trouble gaining accessing to your DVR remotely)

Copyright ©2012 Sting Alarm, Inc. All rights reserved. Reproduction in whole or in part without permission is prohibited



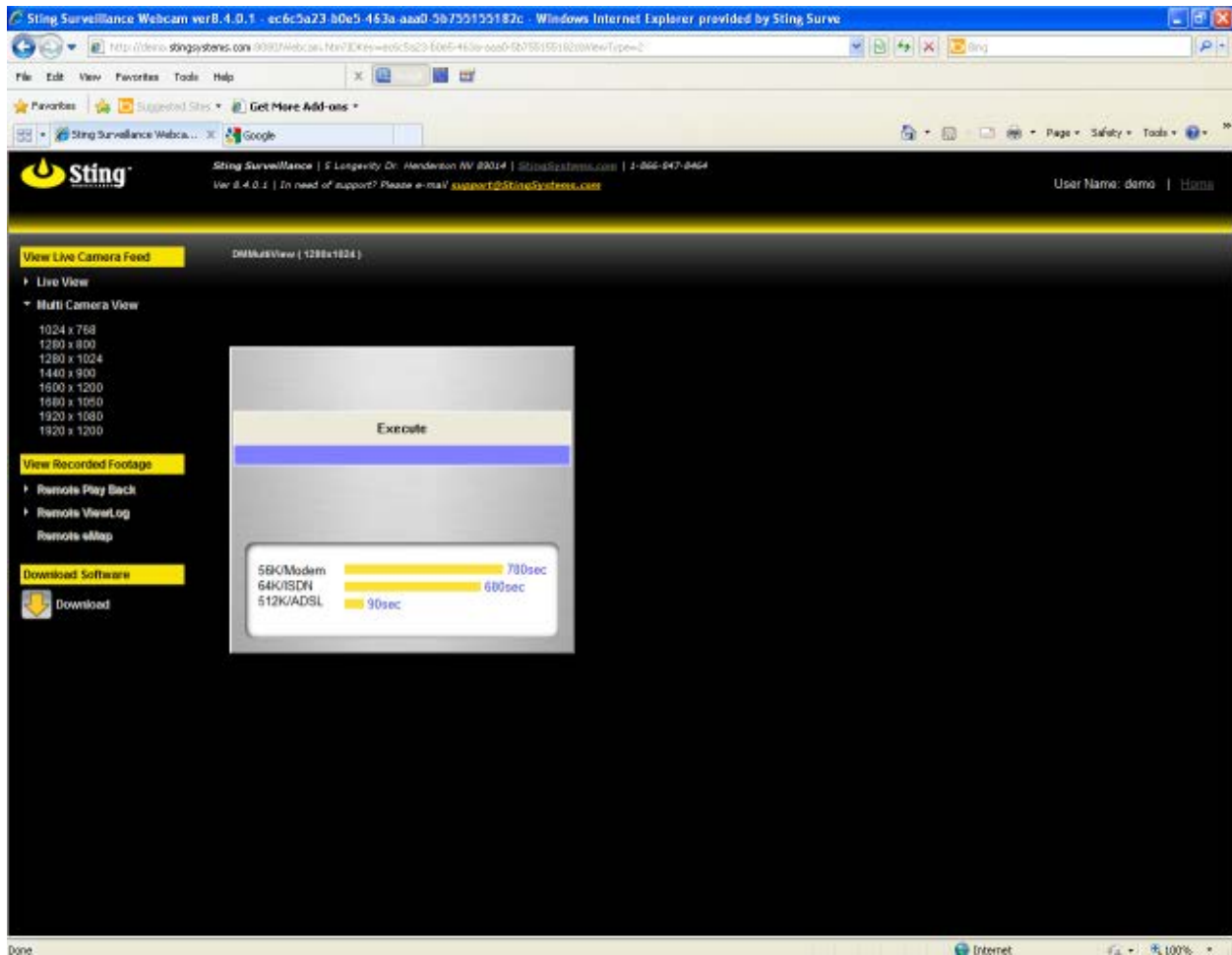
# User's Manual Version 8.5

- ❖ Choose the Multi-Cam Streaming Viewer to watch live images.

You can also choose how many cameras you would like to view at once...The more cameras; the more speed becomes an issue for image quality and the smoothness of the playback.

- ❖ Click Submit to bring up the Multi View Screen

This screen will pop up to indicate how long it will take for the remote viewer to load. In the example below the multi view monitor will take over 10 minutes to load on a 56K Dialup line.

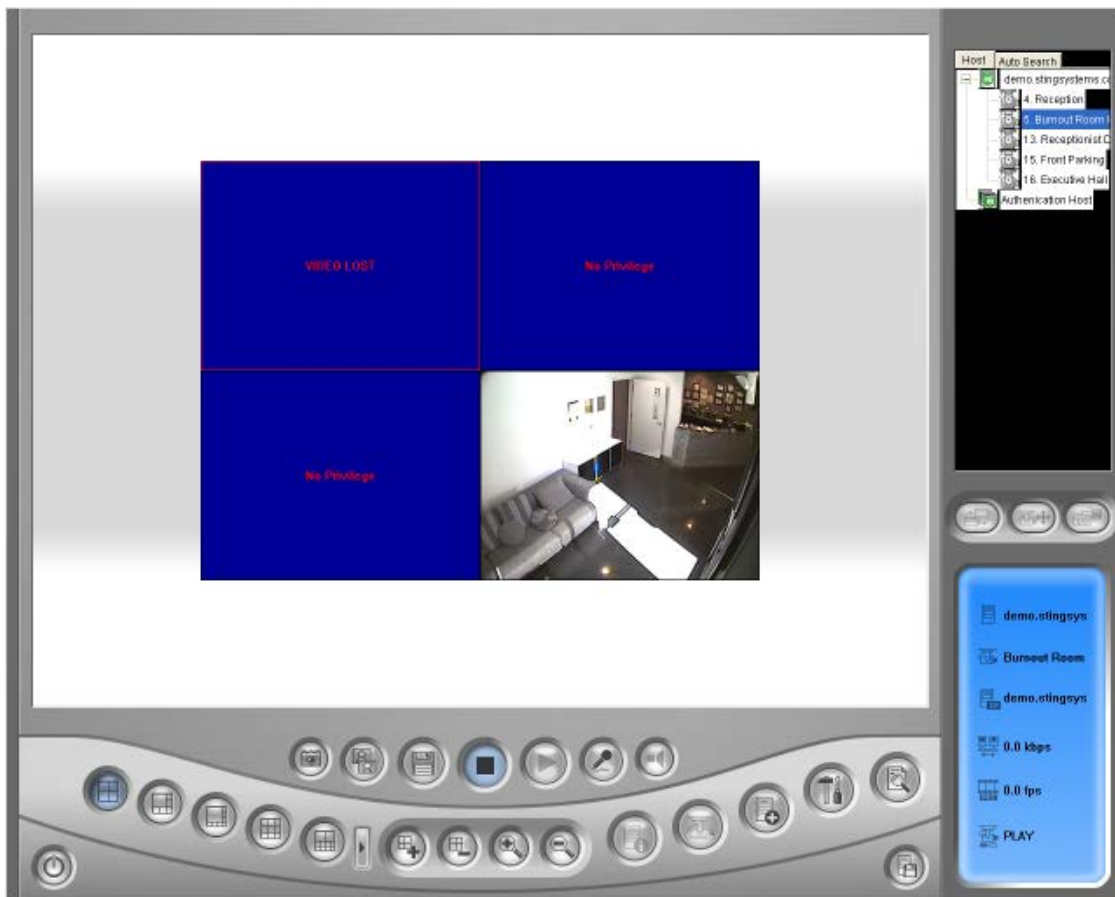
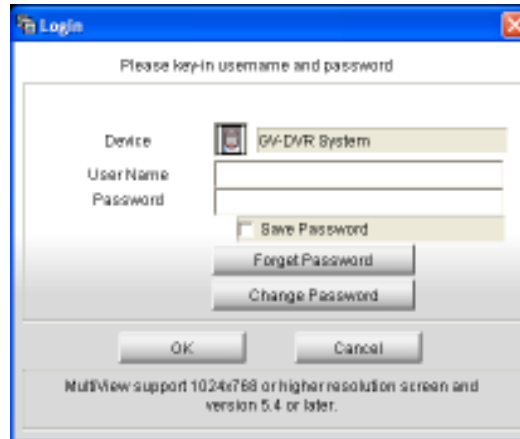


Copyright ©2012 Sting Alarm, Inc. All rights reserved. Reproduction in whole or in part without permission is prohibited





# User's Manual Version 8.5





# User's Manual Version 8.5

## Customer Training Acknowledgement

Thank you again for choosing Sting for your business needs. This initial training is included in the purchase price of your system. Additional training may be arranged by contacting your sales representative or our sales department.

Company Name: \_\_\_\_\_

Customer Trained: \_\_\_\_\_

Please Initial Items if Complete

### Operation

- DVR Startup
- Login
- Keylock
- Basic Monitoring
- DVR Shutdown

### Event Selection and Playback

- Playback Controls and Features
- Event Selection
- Basic Search
- Advanced Search

### Copy an event to CD or DVD

- Media Selection
- Selecting an event for backup
- Burning to a CD/DVD

### Advanced Operation

- Changing Recording Resolution
- Block an area from motion detection
- POS Interface
- Pan Tilt Zoom (PTZ) Camera Operation

I acknowledge that I have been trained in the proper use and operation of the Sting DVR(s) that are installed at my site.

**Customer Signature:** \_\_\_\_\_ **Date:** \_\_\_\_\_